



IPDENGINEERING.COM



IT IS A VIOLATION OF NEW YORK STATE LAW FOR ANY PERSON, UNLESS HE OR SHE IS ACTING UNDER THE DIRECTION OF A LICENSED PROFESSIONAL ENGINEER TO ALTER AN ITEM ON THIS DRAWING IN ANY WAY. IF AN ITEM BEARING THE SEAL OF AN ENGINEER IS ALTERED, THE ALTERING ENGINEER SHALL AFFIX TO THE ITEM HIS SEAL AND THE NOTATION "ALTERED BY" FOLLOWED BY HIS SIGNATURE AND THE DATE OF SUCH ALTERATION, AND A SPECIFIC DESCRIPTION OF THE ALTERATION.

TO THE BEST OF MY KNOWLEDGE, BELIEF AND PROFESSIONAL JUDGEMENT, THESE DRAWINGS ARE IN COMPLIANCE WITH APPLICABLE NEW YORK STATE BUILDING CODES INCLUDING THE ENERGY CONSERVATION CONSTRUCTION CODE OF NEW YORK STATE.

SHERIDAN ENGINEERING

SYLVAN BEACH DEPARTMENT  
OF PUBLIC WORKS

SYLVAN BEACH, NY 13157

0	12.08.23	BID DOCUMENTS	
MK	DATE	DESCRIPTION	
PROJECT NO.		23-5405	
DATE		12/08/2023	
DRAWN BY		RWR	
CHECKED BY		AD	

THIS DOCUMENT AND THE DESIGN SOLUTIONS CONTAINED HEREIN REPRESENT PROPRIETARY INFORMATION OF IPDENGINEERING AND MAY NOT BE REPRODUCED NOR DISCLOSED IN WHOLE OR IN PART BY ANY PARTY RECEIVING THIS DOCUMENT WITHOUT PRIOR WRITTEN CONSENT.

SHEET TITLE

GENERAL  
INFORMATION

SHEET NUMBER

M-001

### MECHANICAL SYMBOLS

	- TEMPERATURE SENSOR		- PIPE ELBOW DN
	- DUCT SMOKE DETECTOR		- BALL VALVE
	- ROUND DUCTWORK		- PIPE FLOW ARROW
	- FLOW ARROW		- REVISION/KEYED NOTE
	- NEW PIPING, DUCTWORK, AND EQUIPMENT		- KEYED NOTE
	- EXISTING TO REMAIN PIPING, DUCTWORK, AND EQUIPMENT		
	- HORIZONTAL UNIT HEATER		

SINGLE LINE		DOUBLE LINE	
	- MANUAL VOLUME DAMPER		
	- AUTOMATIC AIR DAMPER		
	- SUPPLY/OUTSIDE AIR RECTANGULAR ELBOW UP		
	- SUPPLY/OUTSIDE AIR RECTANGULAR ELBOW DN		
	- RETURN/EXHAUST AIR RECTANGULAR ELBOW UP		
	- RETURN/EXHAUST AIR RECTANGULAR ELBOW DN		
	- MITERED ELBOW WITH TURNING VANES		
	- 45° DEGREE LEADING EDGE BRANCH TAKEOFF		

### GENERAL NOTES:

- DRAWINGS ARE DIAGRAMMATIC AND INDICATE GENERAL ARRANGEMENT OF SYSTEMS AND WORK INCLUDED IN THE CONTRACT. IT IS NOT INTENDED TO SPECIFY OR SHOW EVERY OFFSET, FITTING OR COMPONENT; HOWEVER, CONTRACT DOCUMENTS REQUIRE COMPONENTS AND MATERIALS WHETHER OR NOT INDICATED OR SPECIFICALLY SPECIFIED TO MAKE THE SYSTEMS BEING INSTALLED COMPLETE, CODE COMPLIANT, TESTED AND OPERATIONAL.
- CONTRACTOR SHALL FIELD VERIFY ALL LOCATIONS, DIMENSIONS AND ELEVATIONS PRIOR TO CONSTRUCTION.
- ALL MATERIALS, EQUIPMENT, METHODS OF INSTALLATION, REMOVALS AND DISPOSAL SHALL BE IN ACCORDANCE WITH THE STANDARDS, REGULATIONS, CODES, ORDINANCES, AND LAWS OF LOCAL, STATE, AND FEDERAL GOVERNMENTS, AND OTHER AUTHORITIES THAT HAVE LAWFUL JURISDICTION.
- PERFORM WORK, PROVIDE MATERIALS AND EQUIPMENT FOR SYSTEMS SHOWN, SPECIFIED AND DESCRIBED ON DRAWINGS. COMPLETELY COORDINATE ALL TRADES OF THIS CONTRACT AND PROVIDE COMPLETE AND FULLY FUNCTIONAL INSTALLATION. ALL WORK IN THIS SET TO BE COMPLETED UNDER THIS CONTRACT, UNLESS OTHERWISE INDICATED.
- PROTECT ALL EXISTING AND NEW BUILDING ELEMENTS (INSTALLED BY OTHER CONTRACTS) FROM DAMAGE. CONTRACTOR SHALL RESTORE ALL DAMAGED ELEMENTS TO ORIGINAL OR BETTER CONDITION.
- WORK SHALL BE EXECUTED IN A WORKMANLIKE MANNER AND SHALL PRESENT NEAT, RECTILINEAR APPEARANCE WHEN COMPLETED. MAINTAIN MAXIMUM HEAD ROOM AT ALL TIMES. DO NOT RUN PIPES, DUCTS, AND CONDUIT EXPOSED UNLESS SHOWN AND NOTED TO BE EXPOSED ON DRAWINGS.
- MATERIALS AND EQUIPMENT SHALL BE NEW AND INSTALLED ACCORDING TO MANUFACTURER'S INSTRUCTIONS AND RECOMMENDATIONS. MAINTAIN MANUFACTURER'S EQUIPMENT CLEARANCES.
- CONTRACTOR IS RESPONSIBLE FOR ALL WORK RELATED TO ISOLATING, SHUTTING DOWN, DRAINING, FILLING AND TESTING SYSTEMS TO ALLOW FOR COMPLETION OF WORK. INTERRUPTIONS TO EXISTING SERVICES AND SYSTEMS SHALL BE AS SHORT AS POSSIBLE AND AT A TIME AND DURATION APPROVED BY THE OWNER AND UTILITY AS APPLICABLE. INCLUDE ALL PREMIUM TIME ASSOCIATED WITH INTERRUPTIONS. ALL SYSTEM INTERRUPTIONS SHALL BE SCHEDULED WITH OWNER, UTILITY AND COORDINATED WITH OTHER TRADE WORK.
- ALL EQUIPMENT PIPING, WIRING, INSULATION ETC. INSTALLED IN HVAC AIR PLENUM SPACES SHALL MEET CODE REQUIREMENTS FOR SMOKE AND COMBUSTIBILITY.
- SEAL ALL PENETRATIONS THROUGH FIRE RATED WALLS, PARTITIONS AND FLOORS WITH UL RATED MATERIALS/METHODS EQUIVALENT TO FIRE RATING OF ASSEMBLY.
- COORDINATE ALL WALL/FOUNDATION PENETRATIONS WITH GENERAL CONTRACT AND SEAL WEATHERTIGHT. PROVIDE STAINLESS STEEL ESCUTCHEON PLATE/TRIM RING FOR EACH ABOVE GRADE PENETRATION (BOTH SIDES).
- PROVIDE PROPER ACCESS TO EQUIPMENT THAT REQUIRES INSPECTION, REPLACEMENT OR REPAIR. ACCESS PANELS/DOORS SHALL BE A MINIMUM OF 12"x12", UNLESS OTHERWISE NOTED.
- DO NOT SUPPORT EQUIPMENT FROM SUSPENDED CEILINGS. ALL SUPPORT SHALL BE FROM BUILDING STRUCTURE OR FROM CEILING SUSPENSION SYSTEM WHICH HAS BEEN REINFORCED. SUPPORTS SHALL BE SELECTED AND INSTALLED TO PROVIDE A VIBRATION FREE INSTALLATION.

### HVAC ABBREVIATIONS

AAD - AUTOMATIC AIR DAMPER	EAT - ENTERING AIR TEMPERATURE	HQA - HAND / OFF / AUTO	PD - PRESSURE DROP
ACCU - AIR COOLED CONDENSING UNIT	E.C. - ELECTRICAL CONTRACTOR	HP - HEAT PUMP	PHC - PREHEAT COIL
AD - ACCESS DOOR	EER - ENERGY EFFICIENCY RATIO	HX - HEAT EXCHANGER	PRE - POWER ROOF EXHAUSTER
AFF - ABOVE FINISHED FLOOR	EF - EXHAUST FAN	L - LOUVER	PRV - PRESSURE REDUCING VALVE
AHU - AIR HANDLING UNIT	ERV - ENERGY RECOVERY VENTILATOR	(L) - ACOUSTIC THERMAL LINING - 1-1/2" THICK	SIG - POUNDS PER SQUARE INCH GAGE
B - BOILER	ESP - EXTERNAL STATIC PRESSURE	(ZL) - ACOUSTIC THERMAL LINING - 2" THICK	PTAC - PACKAGED TERMINAL AIR CONDITIONER
BDD - BACKDRAFT DAMPER	ET - EXPANSION TANK	LAT - LEAVING AIR TEMPERATURE	QTY - QUANTITY
CC - COOLING COIL	ETR - EXISTING TO REMAIN	LB - POUND	RA - RETURN AIR
CFM - CUBIC FEET PER HOUR	EUI - ELECTRIC UNIT HEATER	LDB - LEAVING DRY BULB	RAT - RETURN AIR TEMPERATURE
CH - CHILLER	EWB - ENTERING WET BULB	LF - LINEAR FEET	RF - RETURN FAN
CLG - CEILING	EWI - ELECTRIC WALL HEATER	LWB - LEAVING WET BULB	RH - RELATIVE HUMIDITY
COMP - COMPRESSOR	EWI - ELECTRIC WALL HEATER	LWT - LEAVING WATER TEMPERATURE	RHC - REHEAT COIL
COND - CONDENSATE	EWT - ENTERING WATER TEMPERATURE	LMT - MIXED AIR TEMPERATURE	RL - REFRIGERANT LIQUID
CP - CONDENSATE PUMP	EXH - EXHAUST	MAU - MAKE UP AIR HANDLING UNIT	RP - RADIANT PANEL
CT - COOLING TOWER	EXIST - EXISTING	MBH - THOUSAND BTU/HOUR	RTU - ROOF TOP UNIT
CTWR - COOLING TOWER WATER RETURN	FIS - COMBINATION FIRE SMOKE DAMPER	M.C. - MECHANICAL CONTRACTOR	SA - SUPPLY AIR
CTWS - COOLING TOWER WATER SUPPLY	FCU - FLEXIBLE CONNECTION	NA - NOT APPLICABLE	SAT - SUPPLY AIR
CUH - CABINET UNIT HEATER	FCU - FAN COIL UNIT	NC - NOISE CRITERIA	SD - SMOKE DAMPER
CWH - CHILLED WATER HEATER	FD - FIRE DAMPER	N.C. - NORMALLY CLOSED	ST - STEAM TRAP
CWR - CHILLED WATER RETURN	FF - FINAL FILTER	NG - NATURAL GAS	TYP - TYPICAL
CWS - CHILLED WATER SUPPLY	FPM - FEET PER MINUTE	N.O. - NORMALLY OPEN	UH - UNIT HEATER
DB - DRYBULB	FPS - FEET PER SECOND	NTS - NOT TO SCALE	UV - UNIT VENTILATOR
(DBL) - (DBL)	FS - FLOW SWITCH	OA - OUTSIDE AIR	VV - VARIABLE AIR VOLUME
DDC - DIRECT DIGITAL CONTROL	FT - FEET	OAT - OUTSIDE AIR TEMPERATURE	VD - VOLUME DAMPER
DN - DOWN	FSD - FIRE SMOKE DAMPER	OC - ON-CENTER	VFD - VARIABLE FREQUENCY DRIVE
DSD - DUCT SMOKE DETECTOR	FT - FEET	OD - OUTSIDE DIAMETER	VRV - VARIABLE REFRIGERANT VOLUME
DX - DIRECT EXPANSION	FTR - FIN TUBE RADIATION	P - PUMP	WW - WALL TO WALL
(E) - EXISTING	G.C. - GENERAL CONTRACTOR	P.C. - PLUMBING CONTRACTOR	
EA - EXHAUST AIR	H - HUMIDIFIER		
	HC - HEATING COIL		



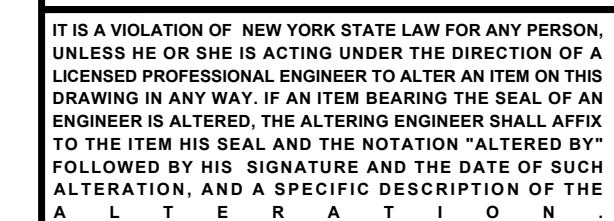


SCALE: 1/4" = 1'-0"

1. COORDINATE ALL EXTERIOR PENETRATIONS WITH ARCHITECT AND OWNER.

S: 

1. INSTALL F-1 AS HIGH AS POSSIBLE ON STORAGE MEZZANINE. COORDINATE FINAL LOCATION WITH OWNER.
2. ROUTE DUCTWORK WITHIN MEZZANINE JOIST SPACE. COORDINATE BRIDGING REMOVAL WITH STRUCTURAL ENGINEER.
3. 14x14 EXHAUST AIR UP WITH AAD TO EF-2 ON ROOF. TRANSITION TO FAN CONNECTION SIZE AS REQUIRED. TERMINATE DUCT DROP 12" BELOW STRUCTURE OPEN ENDED WITH WELDED WIRE MESH.



TO THE BEST OF MY KNOWLEDGE, BELIEF AND PROFESSIONAL JUDGEMENT, THESE DRAWINGS ARE IN COMPLIANCE WITH APPLICABLE NEW YORK STATE BUILDING CODES INCLUDING THE ENERGY CONSERVATION CONSTRUCTION CODE OF NEW YORK STATE.

SYLVAN BEACH, NY 13157

0	12.08,23	BID DOCUMENTS
MK	DATE	DESCRIPTION

PROJECT NO.	23-5405
DATE	12/08/2023
DRAWN BY	RWR
CHECKED BY	AD

THIS DOCUMENT AND THE DESIGN SOLUTIONS CONTAINED  
HEREIN REPRESENT PROPRIETARY INFORMATION OF  
IPD-ENGINEERING AND MAY NOT BE REPRODUCED NOR  
DISCLOSED IN WHOLE OR IN PART BY ANY PARTY RECEIVING THIS  
DOCUMENT WITHOUT PRIOR WRITTEN CONSENT.

**SHEET TITLE**

# FIRST FLOOR PLAN

SHEET NUMBER

M-101







FURNACE SCHEDULE													
UNIT NO.	LOCATION	CFM	E.S.P. IN W.C.	TYPE	INPUT CAPACITY MBH	OUTPUT CAPACITY MBH	AFUE %	MOTOR				DESIGN EQUIPMENT	REMARKS
								RPM	HP	VOLTS	PHASE		
F-1	MEZZANINE	1100	0.9	HORIZ	40	38.8	96.0	1075	0.5	120	1	TRANE S9X2B040U3PSBA	1, 2, 3

REMARKS:

- PROVIDE WITH 2-STAGE BURNER.
- PROVIDE WITH DIRECT DRIVE BLOWER.
- FIELD CONVERT TO LIQUID PROPANE.

COOLING COIL SCHEDULE - DX												
UNIT NO.	LOCATION	SERVICE	FACE VEL FPM	ROWS AND CIRCUITS	EAT		LAT		PD IN W.G.	TOTAL TONS	DESIGN EQUIPMENT	REMARKS
					DB	WB	DB	WB				
CC-1	MEZZANINE	F-1	-	3 AND 1	78.1	64.5	55.0	54.5	0.4	3.0	TRANE 4TXCB003DS3	1

NOTES:

- PROVIDE COOLING COIL FOR HORIZONTAL INSTALLATION.

AIR COOLED CONDENSING UNIT SCHEDULE - 95 DEG F OAT.													
UNIT NO.	LOCATION	CAPACITY TONS	CONDENSER FANS			COMPRESSOR			ELECTRICAL			DESIGN EQUIPMENT	REMARKS
			NO. OF FANS	RPM	HP E.A.	NO.	HP E.A.	NO. OF STAGES	VOLTS	PHASE	MCA		
ACCU-1	AT GRADE	3.0	1	850	1/8	1	-	1	208	1	18	TRANE 4TTR4036N1000B	NONE

FAN SCHEDULE															
UNIT NO.	LOCATION	SERVICE	TYPE	CFM	ESP	FAN RPM	OUTLET VEL FPM	SONES	DRIVE	MOTOR				DESIGN EQUIPMENT	REMARKS
										RPM	HP	VOLTS	PHASE		
EF-1	MAINTENANCE GARAGE	GENERAL EXHAUST	INLINE	4500	0.75	1540	1125	19.1	DIRECT	1750	2	208	1	GREENHECK SQ-16-VG	1, 2, 3
EF-2	WELDING AREA	GENERAL EXHAUST	ROOF	500	0.25	1157	431	5.2	DIRECT	1725	1/6	115	1	GREENHECK G-095-VG	2, 3, 4
EF-3	MECH / STORAGE	GENERAL EXHAUST	INLINE	200	.25	1209	200	4.8	DIRECT	1725	1/10	115	1	GREENHECK SQ-80-VG	2, 3, 8
EF-4	STORAGE MEZZANINE	GENERAL EXHAUST	INLINE	300	0.75	1529	229	10.8	DIRECT	1725	1/4	115	1	GREENHECK SQ-98-VG	2, 3
CF-1	MAINTENANCE GARAGE	DE-STRATIFICATION	HVLS	9,065	-	121	87	27 dBA	DIRECT	165	50(w)	115	1	GREENHECK - DC-S-6-3MV	5, 6, 7
CF-2	MAINTENANCE GARAGE	DE-STRATIFICATION	HVLS	9,065	-	121	87	27 dBA	DIRECT	165	50(w)	115	1	GREENHECK - DC-S-6-3MV	5, 6, 7

REMARKS:

- PROVIDE WALL SWITCH FOR MANUAL OVERRIDE.
- PROVIDE EC MOTOR WITH SPEED DIAL CONTROL AT UNIT
- PROVIDE INTEGRAL NON-FUSED DISCONNECT SWITCH.
- PROVIDE 24" HIGH ROOF CURB
- PROVIDE WITH 12" DROP LEG.
- PROVIDE WITH CABLE CLAMP AND SAFETY CABLE KIT.
- PROVIDE WITH TOUCHSCREEN CONTROLLER.
- PROVIDE WITH LOW VOLTAGE THERMOSTAT.

LOUVER AND PENTHOUSE SCHEDULE											
UNIT NO.	LOCATION	SERVICE	CFM	LOUVER OR THROAT FREE AREA	APPROXIMATE SIZE			MAX PD IN W.G.	BIRD SCREEN	DESIGN EQUIPMENT	REMARKS
					LENGTH	DEPTH	HEIGHT				
L-1	STORAGE MEZZ.	EXHAUST	300	0.80	20	4	16	0.02	YES	GREENHECK - ESD-435	1
L-2	MAINTENANCE	EXHAUST	4500	6.37	56	6	40	0.039	YES	GREENHECK - ESD-635	1
L-3	WELDING AREA	INTAKE	500	1.10	24	6	18	0.031	YES	GREENHECK - ESD-635	1
L-4	MECH. / STORAGE	INTAKE	200	0.47	18	6	14	0.027	YES	GREENHECK - ESD-635	1
L-5	MECH. / STORAGE	EXHAUST	200	0.47	18	6	14	0.027	YES	GREENHECK - ESD-635	1
L-6	STORAGE MEZZ.	INTAKE	300	0.57	16	6	16	0.037	YES	GREENHECK - ESD-635	1

REMARKS:

- COLOR TO BE SELECTED BY ARCHITECT FROM MANUFACTURERS FULL LINE OF COLORS AND FINISHES

DUCTWORK MATERIALS		
SERVICE	MATERIAL	JOINT CONSTRUCTION
SUPPLY, RETURN, VENT, RELIEF, AND EXHAUST	LOCK FORMING QUALITY, GALVANIZED STEEL ASTM 525 OR 527	FLANGED WITH BUTYL GASKET, BRUSH ON, SEAL CLASS B
AIR PLENUMS AT ROOF OR WALL, INTAKE OR EXHAUST	TYPE 304 STAINLESS STEEL OR GALVANIZED STEEL	BRAZE OR WELD WATERTIGHT
ACCESSORIES, DAMPERS AND AIR TURNS	SAME OR BETTER AS PARENT DUCT	-----

PIPING MATERIALS			
SERVICE	PIPE MATERIALS	FITTINGS	CONNECTIONS
REFRIGERANT PIPING	TYPE ACR	WROUGHT COPPER FITTINGS	BRAZED

INSULATION SCHEDULE													
TYPE	EQUIPMENT OR SYSTEM SERVED	INSULATION CLASS (a)			JACKETING CLASS (b)			THICKNESS (IN)					
		INTERIOR CONCEALED			INTERIOR EXPOSED			NOMINAL PIPE SIZE (IN)					DUCTWORK
		INTERIOR CONCEALED	INTERIOR EXPOSED	EXTERIOR	INTERIOR CONCEALED	INTERIOR EXPOSED	EXTERIOR	LESS THAN 1	1 TO < 1.5	1.5 TO < 4	4 TO < 8	≥ 8	
A	RS, RL	FE	FE	FE	0	0	3	0.5	0.5	1	1	1	
B	DUCTWORK	FG (d)	--	--	2	--	--	--	--	--	--	--	1.5(g)
		--	FG (e)	--	--	1	--	--	--	--	--	--	2 f)(g)
		--	--	--	--	--	--	--	--	--	--	--	
(a) FG -- FIBROUS GLASS FE -- FLEXIBLE ELASTOMERIC		(b) 0 -- NONE 1 -- ALL SERVICE 2 -- ALUMINUM FOIL 3 -- POLYVINYL CHLORIDE			(c) SUPPLY AIR OUTSIDE AIR MIXED AIR RETURN AIR			(f) EXCEPT DUCTWORK WITHIN CONDITIONED SPACE					
					(d) BLANKET			(g) INSULATE EXHAUST AIR 15'-0" FROM EXTERIOR PENETRATION					
					(e) RIGID BOARD								

UNIT HEATER SCHEDULE - GAS													
UNIT NO.	LOCATION	TYPE	CFM	OUTPUT MBH	MIN. GAS PRESS BEFORE REGULATOR	EAT DEG F	LAT DEG F	FAN MOTOR				DESIGN EQUIPMENT	REMARKS
								RPM	HP	VOLTS	PHASE		
UH-1	MAINTENANCE	HORIZONTAL	3,840	249.0	7" WC	65.0	125.0	1050	1/2	115	1	REZNOR - UDAP-300	1, 2
UH-2	WELDING AREA	HORIZONTAL	450	24.6	7" WC	65	115.0	1550	.02	115	1	REZNOR - UDZ-030	2

REMARKS:

- PROVIDED BY OWNER, FOR REFERENCE ONLY.
- PROVIDE HORIZONTAL VENT/COMBUSTION AIR KIT.

UNIT HEATER SCHEDULE - ELECTRIC															
UNIT NO.	LOCATION	TYPE	CFM	CAPACITY MBH	KW	VOLTS	PHASE	EAT DEG F	LAT DEG F	FAN MOTOR				DESIGN EQUIPMENT	REMARKS
										RPM	HP	VOLTS	PHASE		
EUH-1	MECH / STORAGE	HORIZONTAL	350	10.2	3.0	208	1	65.0	92.0	1600	1/100	208	1	QMARK - MUH03-81	1, 2, 3

REMARKS:

- PROVIDE WALL MOUNT BRACKET.
- PROVIDE WITH DISCONNECT SWITCH.
- PROVIDE WITH REMOTE THERMOSTAT.



BUFFALO | ROCHESTER | SYRACUSE | UTICA  
IPDENGINEERING.COM



IT IS A VIOLATION OF NEW YORK STATE LAW FOR ANY PERSON, UNLESS HE OR SHE IS ACTING UNDER THE DIRECTION OF A LICENSED PROFESSIONAL ENGINEER TO ALTER AN ITEM ON THIS DRAWING IN ANY WAY. IF AN ITEM BEARING THE SEAL OF AN ENGINEER IS ALTERED, THE ALTERING ENGINEER SHALL AFFIX TO THE ITEM HIS SEAL AND THE NOTATION "ALTERED BY" FOLLOWED BY HIS SIGNATURE AND THE DATE OF SUCH ALTERATION, AND A SPECIFIC DESCRIPTION OF THE ALTERATION.

TO THE BEST OF MY KNOWLEDGE, BELIEF AND PROFESSIONAL JUDGEMENT, THESE DRAWINGS ARE IN COMPLIANCE WITH APPLICABLE NEW YORK STATE BUILDING CODES INCLUDING THE ENERGY CONSERVATION CONSTRUCTION CODE OF NEW YORK STATE.

SHERIDAN ENGINEERING

SYLVAN BEACH DEPARTMENT  
OF PUBLIC WORKS

SYLVAN BEACH, NY 13157

0	12.08.23	BID DOCUMENTS	
MK	DATE	DESCRIPTION	

PROJECT NO.	23-5405
DATE	12/08/2023
DRAWN BY	RWR
CHECKED BY	AD

THIS DOCUMENT AND THE DESIGN SOLUTIONS CONTAINED HEREIN REPRESENT PROPRIETARY INFORMATION OF IPDENGINEERING AND MAY NOT BE REPRODUCED NOR DISCLOSED IN WHOLE OR IN PART BY ANY PARTY RECEIVING THIS DOCUMENT WITHOUT PRIOR WRITTEN CONSENT.

SHEET TITLE

MECHANICAL  
SCHEDULES

SHEET NUMBER

M-601